

Bridge & IET Showcase Webinar

February 23, 2021



Welcome & Introductions

Lori Meyer

Associate Director, Education & Technical Assistance
Manhattan Strategy Group

Advancing Innovation in Adult Education



- 5-year effort to identify and highlight practices in adult education that lead to improved learner outcomes
- Funded by U.S. Department of Education, Office of Career, Technical, and Adult Education
- Led by Manhattan Strategy Group in partnership with Abt Associates

How to Take Part in This Webinar



Click the “Chat” button to ask questions at any point.

Content Questions: To submit a content question, select “All Panelists” from the dropdown menu in the Chat panel, enter your question in the message box provided and send.

Technical Questions: If you require technical assistance, please send a chat to the host.

This presentation is being recorded and will be available after the webinar.

A screenshot of a chat interface window titled 'Chat' with a close button (X) in the top right corner. Below the title bar, there is a 'To:' label followed by a dropdown menu showing 'All Panelists'. Below the dropdown is a text input field with a vertical cursor.A screenshot of a chat interface window titled 'Chat' with a close button (X) in the top right corner. Below the title bar, there is a 'To:' label followed by a dropdown menu showing 'Host'. Below the dropdown is a text input field with the placeholder text 'Enter chat message here'.

Like & Follow on Social Media



Hashtag

#AdultEduINNOVATOR



Twitter Live Posts

@mstrategy



Like Advancing Innovation on Facebook

@AdvancingInnovationinAdultEd



Follow Advancing Innovation on LinkedIn

@AdvancingInnovationinAdultEd

Sharon Lee Miller

Director

Division of Academic and
Technical Education

U.S. Department of
Education



**Office of Career, Technical, and Adult
Education**

U.S. Department of Education

Cheryl Keenan

Director

Division of Adult
Education and Literacy

U.S. Department of
Education



Office of Career, Technical, and Adult
Education

U.S. Department of Education

Adult Education Bridge & IET Programs



Nadine Holthaus

Bridges to Careers Expansion
Rochester Adult Literacy at
Hawthorne
Rochester, MN



Drew Gamet

Career Pathways
South Bay Adult School
Redondo Beach, CA



Tammie Hickey

Connections 101
Great Falls Career and College
Readiness Center
Great Falls, MT



Jan Suding

Certified Clinical Medical Assistant
Jennings County Education Center
North Vernon, IN



Rachel Ambrose

PluggedIn Virginia (PIVA) Boot Camp
Peninsula Regional Education Program
Newport News, VA

Context for Bridge & IET Programs



Bridge Programs

Adult education bridge programs prepare adults to enroll in postsecondary education and training through occupationally contextualized literacy and numeracy instruction and career and college success activities.

IET Programs

IET programs enable adult learners to develop their foundational skills and workforce preparation skills through occupational training that leads to educational and career advancement.

Bridges to Careers Expansion



Bridges to Careers Expansion **Rochester Adult Literacy at Hawthorne** **Rochester, MN**

Innovator in Bridge Programs

THE PRACTICE

The Bridges to Careers Expansion grows existing partnerships to enable a more diverse range of learners to meet their career goals in healthcare pathways.

INNOVATIVE FEATURES

- Incorporated new career pathways in healthcare beyond direct-service healthcare pathways.
- Enrolled learners earn short-term, employer-recognized certificates.
- Learners can receive up to seven articulated credits upon enrollment at Rochester Community and Technical College.
- Monthly partnership meetings to coordinate services for learners.
- Employer partners recognize program completion certificates and have agreed to interview and consider hiring completers.



Career Pathways



Career Pathways

South Bay Adult School (SBAS)
Redondo Beach, CA

Innovator in IET Programs

THE PRACTICE

The Career Pathways program provides adult learners with a broad range of academic and advising supports while earning industry-recognized credentials in a career pathway.

INNOVATIVE FEATURES

- Academic bridge course incorporates efficiency into the pathway from basic skills to college certificate and industry credentials.
- Courses are co-taught by an SBAS ESL or basic skills instructor and an El Camino College instructor.
- Program funds weekly instructor meetings to discuss learners' progress, coordinate efforts, and plan lessons.
- Learners' progress is bolstered by intensive support services from an SBAS transitions manager and El Camino College counselor.



**South Bay
Adult School**

**INNOVATOR IN
IET PROGRAMS**

Certified Clinical Medical Assistant



Certified Clinical Medical Assistant (CCMA)

Jennings County Education Center (JCEC)
North Vernon, IN

Innovator in IET Programs

THE PRACTICE

Adults living in a rural area can access a nationally recognized credential in the healthcare field while developing their reading and math skills.

INNOVATIVE FEATURES

- The program is delivered in a rural area and eliminates transportation barriers by bringing qualified instructors to the learners.
- The CCMA credential enables learners to obtain a job that is above entry level.
- JCEC offers training providers free physical space to deliver the CCMA courses.



Connections 101



Connections 101

Great Falls Career and College Readiness Center (CCRC) Great Falls, MT

Innovator in Bridge Programs

THE PRACTICE

Adult education, higher education, and workforce stakeholders collaborate to help adult learners gain the skills and strategies they need to be successful in college or the workforce.

INNOVATIVE FEATURES

- A strong partnership between CCRC, Great Falls College Montana State University (GFCMSU), and the Montana Department of Labor and Industry enables CCRC to braid funds to provide a no-cost program for underserved populations.
- Learners can earn up to six prior learning assessment (PLA) credits at GFCMSU upon completion of the program.
- Learners who transition to GFCMSU from CCRC receive 50% off the first six PLA credits that they transfer to the college.



**Great Falls Career
and College
Readiness Center**

**INNOVATOR
IN BRIDGE
PROGRAMS**

PluggedIn Virginia (PIVA) Boot Camp



PluggedIn Virginia (PIVA) Boot Camp

Peninsula Regional Education Program

Newport News, VA

Innovator in Bridge Programs

THE PRACTICE

The PIVA Boot Camp enhances the PluggedIn Virginia model by providing a bridge for learners through contextualized academic instruction and workforce preparation activities in preparation for occupational training.

INNOVATIVE FEATURES

- Expands access to learners that are not eligible for job training programs by delivering instruction in academic, workplace readiness, and occupational skills.
- Offers a flexible model that can be used in a range of industries and with a range of occupational training partners, such as community colleges and state and local government agencies.
- The Boot Camp incorporates career exploration to ensure learners are a good match with their selected occupational training.



**Peninsula
Regional Education
Program**
**INNOVATOR
IN BRIDGE
PROGRAMS**

Panel Discussion

Cheryl Keenan & Sharon Lee Miller

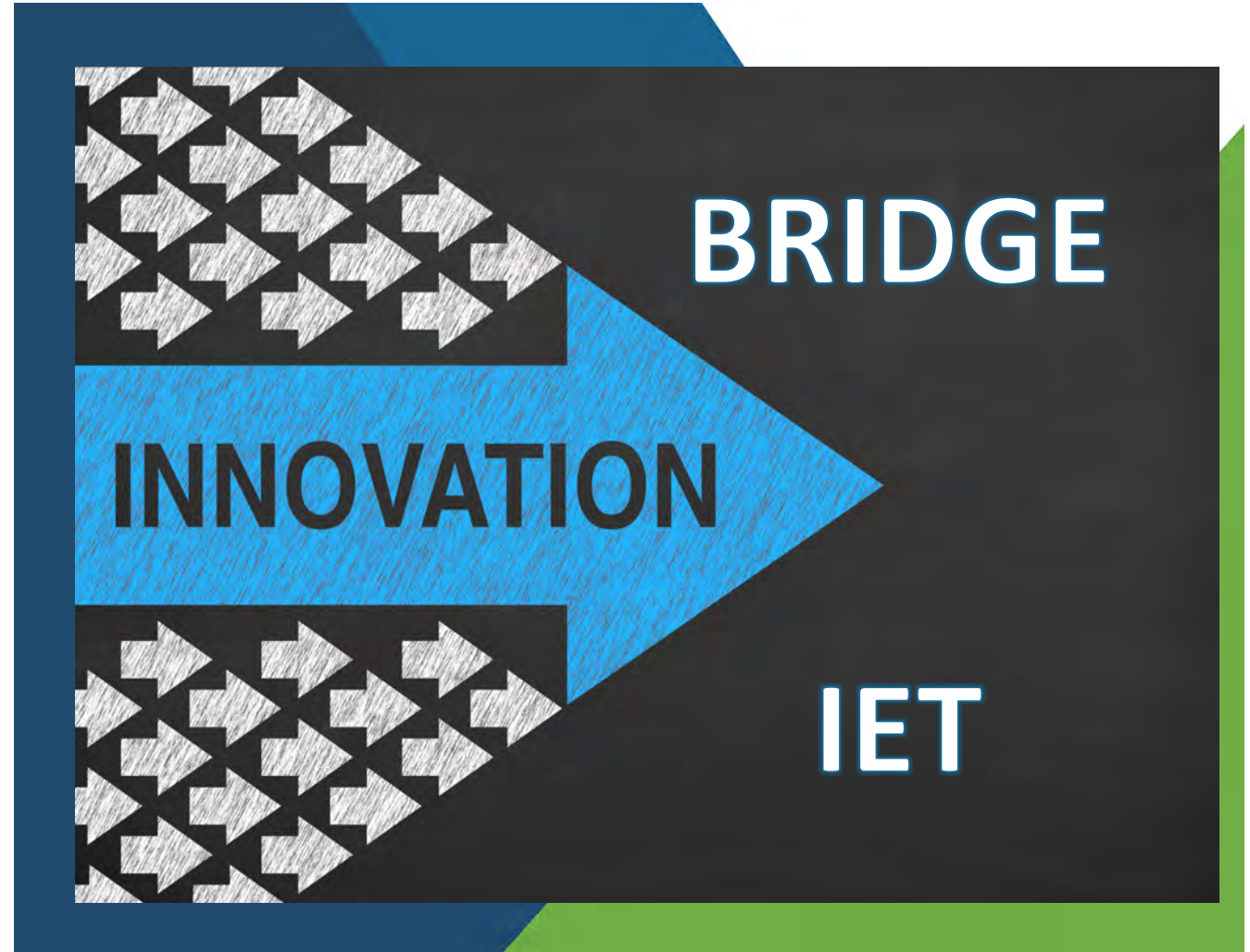
Closing Remarks

Lori Meyer

Learn more

- Gallery of Practices
- Compendium of Innovative Practices
- Apply

lincs.ed.gov/state-resources/federal-initiatives/advancing-innovation



Thank you for participating in today's webinar!

- **Share your feedback:**
complete survey
- **Contact us:**
innovation@lincs.ed.gov

