



PCC IBEST Virtual Site Visit

Advancing Innovation
in Adult Education

October 8, 2020





AGENDA

- Welcome
- Pima's Innovations in IBEST
- Remarks from Assistant Secretary Scott Stump
- PCC IBEST: A Deeper Dive
- Student & Teacher Roundtable Discussion
- Collaborators Roundtable Discussion





Cheryl L. Keenan

**Director of Adult Education and Literacy
Office of Career, Technical, and Adult Education
United States Department of Education**



PimaCommunityCollege



PCC IBEST

Integrated Basic Education and Skills Training



PimaCommunityCollege



IET

**Adult Education and Literacy
Workforce Preparation
Workforce Training**



PimaCommunityCollege

PCC IBEST: Multiple Goals



01

**Postsecondary
Certificate**



03

Employment

**High School
Equivalency
Diploma**



02

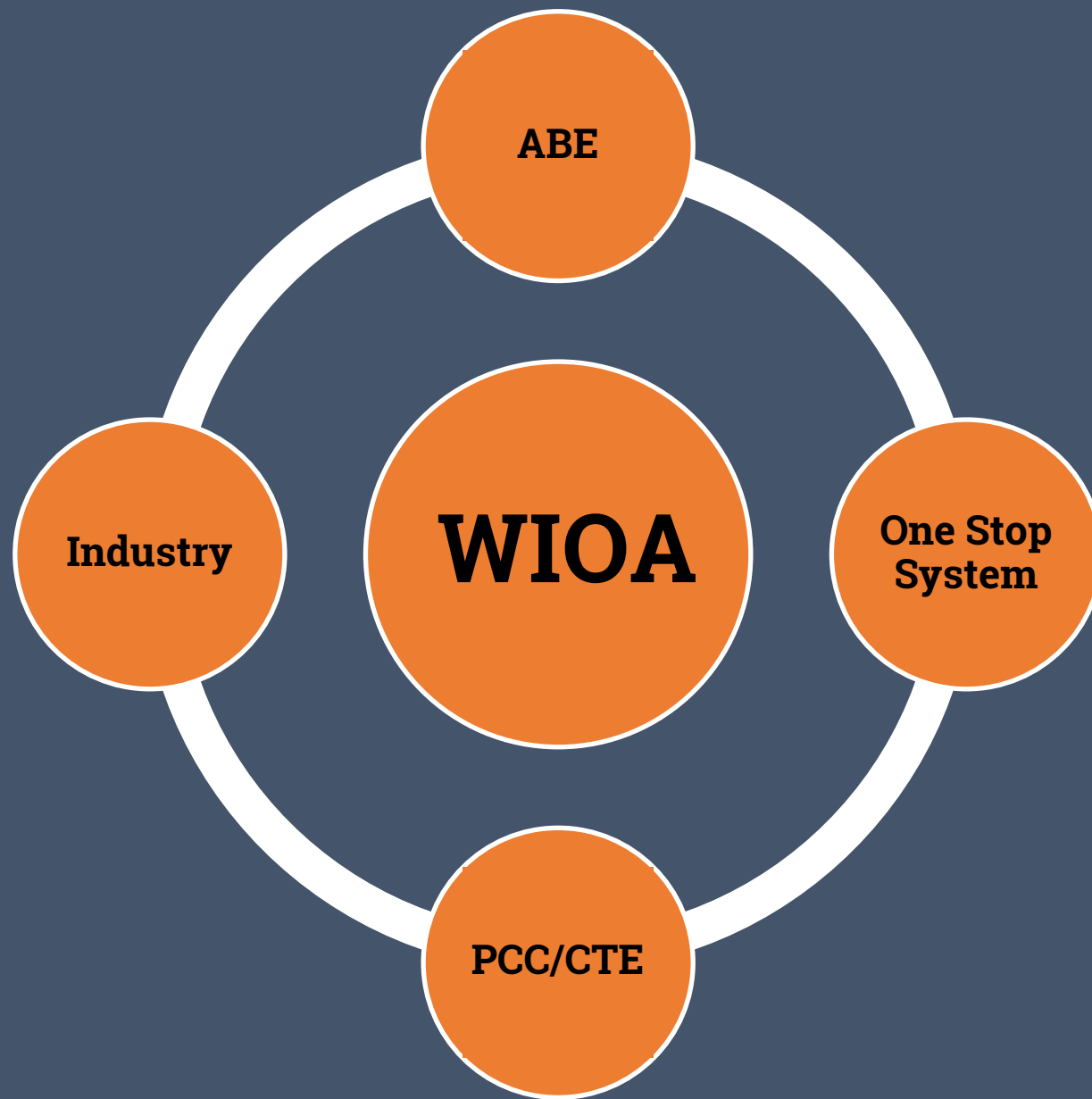
**Industry
Recognized
Credentials**



04



PimaCommunityCollege



PCC IBEST: Our Model



1

Adult education + CTE instructors

2

Cohort model, one year

3

Level 1 Certificate

4

Embedded wraparound support



PimaCommunityCollege

Innovations in IBEST

#1: Integrated Support for HSE

- 1 HSE-seeking/non HSE-seeking
- 2 GED Ready® in first two weeks
- 3 Testing vouchers provided
- 4 Testing prioritization and instructional support



Innovations in IBEST

#2: Braided Funding/ATB

Basic Skills and Workforce Prep	WIOA Title II & Local College Funds
Career & Technical Instruction	Local College Funds
Tuition and Fees	WIOA Title I & Federal Financial Aid
Wraparound Supports	WIOA Title I / II & Local College Funds



Innovations in IBEST

#3: Co-enrollment with ARIZONA@WORK-Pima County One Stop



Pima Community College
IBEST Certificate Program

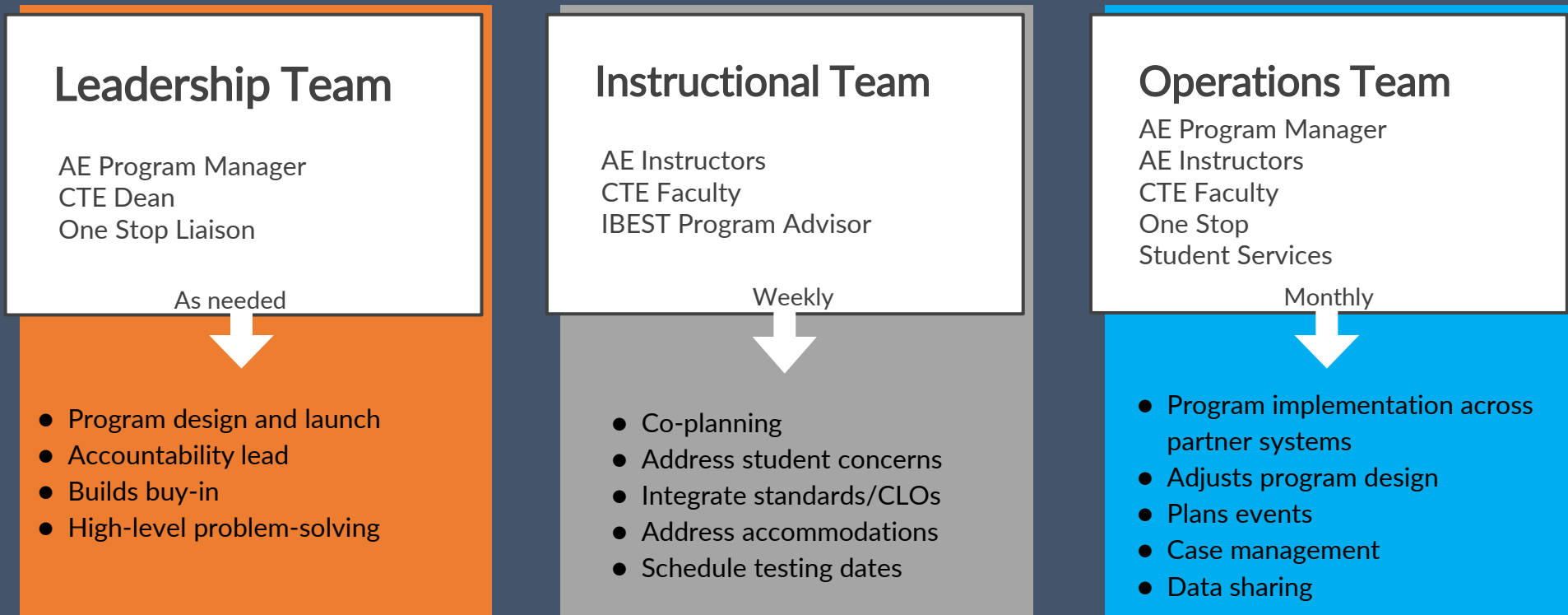


Arizona@Work- Pima
County One Stop



Innovations in IBEST

#4: Collaborative Teams: Leadership, Instruction, Operations



Innovations in IBEST

#5: Embedded Student Services



PimaCommunityCollege



Victoria Hulland

Automated Industrial Technology IBEST Graduate



PimaCommunityCollege



Scott Stump

**Assistant Secretary for Career, Technical, and Adult Education
United States Department of Education**



PimaCommunityCollege

A background image showing a group of students in a workshop or classroom setting. A male student in the foreground is wearing safety glasses and a dark long-sleeved shirt, holding a red level against a wall. Other students are visible in the background, also wearing safety glasses. The scene is dimly lit, with a blue and white striped pattern visible on the left side.

PCC IBEST: A Deeper Dive



PimaCommunityCollege

IBEST 1-Year At-a-Glance

On-ramp

Semester 1: Spring

Semester 2: Summer

Semester 3: Fall

2 weeks

- Complete intake
- Focus: Study skills, academic reading and digital skills
- Learn to navigate college systems
- HSE: Complete GED Ready®

16 weeks

- Begin *Employment Portfolio*
- Focus: Academic reading and study skills
- HSE: Take GED® tests

10 weeks

- Continue *Employment Portfolio*
- Focus: Contextualized math and writing
- HSE: Take GED® tests

16 weeks

- Complete Employment Portfolio
- Focus: Employment readiness
- HSE: Complete GED® tests
- Job Fair

Sample IBEST Integrated Schedule

Monday HCA 119 Intro to Anatomy/Physiology	Tuesday MDA 124 Medical Terminology	Wednesday HCA 119 Intro to Anatomy/Physiology	Thursday MDA 124 Medical Terminology
5:30-7:00pm Integrated Skills AE Instructor only	5:30-7:00pm Integrated Skills AE Instructor only	5:30-7:00pm Integrated Skills AE Instructor only	5:30-7:00pm Integrated Skills AE Instructor only
7:15pm-8:30pm Co-taught Technical Content	7:15pm-8:30pm Co-taught Technical Content	7:15pm-8:30pm Co-taught Technical Content	7:15pm-8:30pm Co-taught Technical Content



Student/Teacher Roundtable

Mary Jo Chmielewski

Adult Education IBEST Instructor

Echo Casey

Adult Education IBEST Instructor

Ben Goodin

Automated Industrial Technology IBEST Graduate

Ariane Duvaul

Automated Industrial Technology Current Student



PimaCommunityCollege

Why Do We Collaborate?

- 1 Access
- 2 Acceleration
- 3 Completion
- 4 Employment

IBEST Outcomes

75%

Average IBEST
completion rate

70%

IBEST grads seeking
HSE diploma passed
GED® during program

80%

IBEST grads gained
employment post-
program



PimaCommunityCollege

Collaborator Perspectives

Arnold Palacios

Director, WIOA Title I Services

Pima County One Stop - ARIZONA@WORK

Ian Roark

Vice President, Workforce Development

Pima Community College



PimaCommunityCollege

Collaborator Roundtable

Wendy Scheder Black

Director of IBEST, PCC

Michael Gates

Program Manager for WIOA Title I, Pima County One Stop - ARIZONA@WORK

Amanda Abens

Dean of Workforce and Continuing Ed, PCC

Stephanie Dennison

Program Advisor for IBEST, PCC



PimaCommunityCollege

To Learn More

To learn more about PCC, visit:

www.pima.edu

To learn more about the Advancing Innovation in Adult Education project, visit LINCS:

www.lincs.ed.gov/state-resources/federal-initiatives/advancing-innovation



PimaCommunityCollege



Thank you



PimaCommunityCollege